

About

The Portland Aerial Tram is a 1km system that stemmed from the growth and development of the Oregon Health and Science University (OHSU), which is located on a plateau. Today, it provides a vital connection between Marquam Hill and the city's South Waterfront District.

While the tram is infamous for exceeding initial budgets, the Aerial Tram is internationally renowned for its architectural achievements and is often recognized as a symbol of Portland's urban landscape.



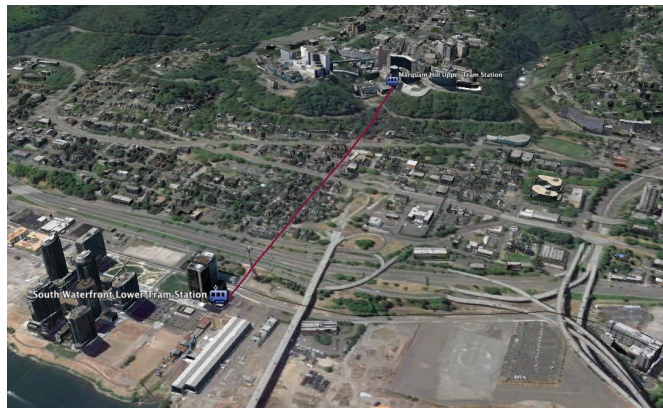
CC image by Flickr user [functoruser](#)

Arriving at Marquam Hill Station

The Route

Students and employees of OHSU ride the tram for free but other riders must pay.

The route passes over a large highway, a historical district, and a large residential area, which caused a great amount of controversy.



System Stats

Technology	Aerial Tram
Year	2007
Length	1 km
Stations	2
Cabin capacity	78 persons
Trip time	3:00
Company	Doppelmayr



CC image by Flickr user [mywestworld](#)

ALL IMAGES BY CUP PROJECTS UNLESS OTHERWISE SPECIFIED



Except where otherwise noted, this work is licensed under <http://creativecommons.org/licenses/by-nc-nd/3.0/>



FIND US ONLINE AT:

gondolaproject.com

creativeurbanprojects.com

Analysis



The system is known for being **highly customized**, with its two “bubble” cabins and a one-of-a-kind tower design. The stations were designed to evoke an open and airy feel. The Marquam Hill station was specially engineered to stand separately from the connecting building, so while passengers can walk between the two, they are actually physically separate. This was done largely due to seismology and earthquake damage concerns.



Vehicle arriving at Marquam Hill Station.



Since the system flies over a residential neighbourhood, it was initially met with considerable **criticism and resistance** from the neighbourhood below. Developers, planners, engineers, politicians, and the like must be aware of each situation and begin public engagement efforts from the onset of each project. Proper route selection, along with proper technology, capacity, and design, will greatly influence the success of an urban CPT system.



Neighbourhood view from the aerial tram.

Related Gondola Project Posts & Pages

- NO CITY WANTS TO BE FIRST <http://gondolaproject.com/2009/11/02>
- NOT OVER MY BACKYARD <http://gondolaproject.com/2009/11/15>
- 6 ICONIC AND IMPORTANT AERIAL TRAMS <http://gondolaproject.com/2010/04/26>
- PORTLAND TRAM GETS MID-AIR MAINTENANCE <http://gondolaproject.com/2010/06/07>
- IS PUBLIC TRANSPORTATION 340% MORE EXPENSIVE THAN IT NEEDS TO BE?
<http://gondolaproject.com/2011/06/20>



PORTLAND AERIAL TRAM

<http://gondolaproject.com/portland>



TECHNOLOGY: AERIAL TRAM

<http://gondolaproject.com/aerialtram>

ALL IMAGES BY CUP PROJECTS UNLESS OTHERWISE SPECIFIED



Except where otherwise noted, this work is licensed under
<http://creativecommons.org/licenses/by-nc-nd/3.0/>



FIND US ONLINE AT:

gondolaproject.com

creativeurbanprojects.com